

# INFORMATION FOR OVERNIGHT GUESTS

## IGLOO-VILLAGE KÜHTAI

Please read this document carefully in order to be properly prepared for the Igloo-Village experience.

The igloo village Kühtai lies 2,000 m above sea level at the foot of deep snow slopes. Far away from the hustle and bustle, you will be located in a ski area with over 80 km of ski slopes.

### Programm

- 5:00 p.m.** Arrive PROMPTLY the meeting point Iglu-Dorf next to hotel Alpenrose, place and time are binding welcoming and instructions through our igloo guides
- from 6:00 p.m.** you have some time to move into the igloo, afterwards activities in and outside of the igloo with aperitif, dinner (at appr. 7.00 p.m.), snowshoeing, sauna and cozy gathering
- 7:30 a.m.** Good-morning tea is served directly to your igloo
- 8:00 a.m.** All guests walk to the restaurant Jagdschloss together to enjoy a rich breakfast buffet, subsequently individual departure

### During your journey

Arrange enough time for the journey in order to arrive at the above mentioned meeting point relaxed and on time. In case of a delay, please contact us immediately via 0800 880 81 88. We ask you to take your mobile phone (with the phone number you indicated during the reservation process) with you so that we can reach you anytime.

#### Travel by bus

Kühtai is easily and comfortably accessible by bus. Take the local bus from Innsbruck or the free ski bus. From the bus stop Kühtai Jagdschloss, the Igloo-Village Kühtai is accessible within a 3-minute walk. You can look up the timetable here: <https://www.kuehtai.info>

#### Travel by car

The Igloo-Village Kühtai is, in contrary to our other Igloo-Villages, directly accessible by car. There are access roads from the East (via Fernpass, Imst, Ötztal) and from the West (via Innsbruck). Plug in the address Kühtai 24, 6183 Kühtai, Österreich into your satnav in order to reach the parking spaces. In general, the roads are cleared very well, nevertheless, winter tires are absolutely necessary. If it snows during your arrival, snow chains might be compulsory! Please check the circumstances prior to your departure at: <https://www.oeamtc.at/verkehrsservice/>

### Changing rooms, preparation / follow-up

You are free to get changed in our shower / toilet facility and get ready for the igloo night or the journey home. Please contact the Igloo-Bar for further information and coordination, we are happy to help.

We do ask you, not to use the premises and parking lots of the Hotel Alpenrose. This is an adjacent, independent hotel business and does not belong to the Igloo-Village.



### Equipment

Normally the temperatures in the Igloo-Village remain constant at around 0°C.

#### Clothing and equipment:

- Winter-proof, warm clothing (such as for skiing, see picture above)
- Comfortable, warm winter shoes (e.g. snowboard shoes or moonboots)
- Good gloves
- Dry socks, long underwear to change into, also pyjamas
- Two hats (second spare hat in case first hat gets wet)
- Towel, swimwear and flip flops for the whirlpool if required
- A torch or head torch
- Toothbrush & toothpaste
- Cash
- Sunglasses and sun cream
- (Ski-) Goggles (against wind)

A backpack is the ideal item of luggage for the overnight stay in the Igloo-Village.

#### Please do NOT bring the following:

- An expedition sleeping bag and a sleeping bag liner will be provided for you
- Suitcase (unsuitable)

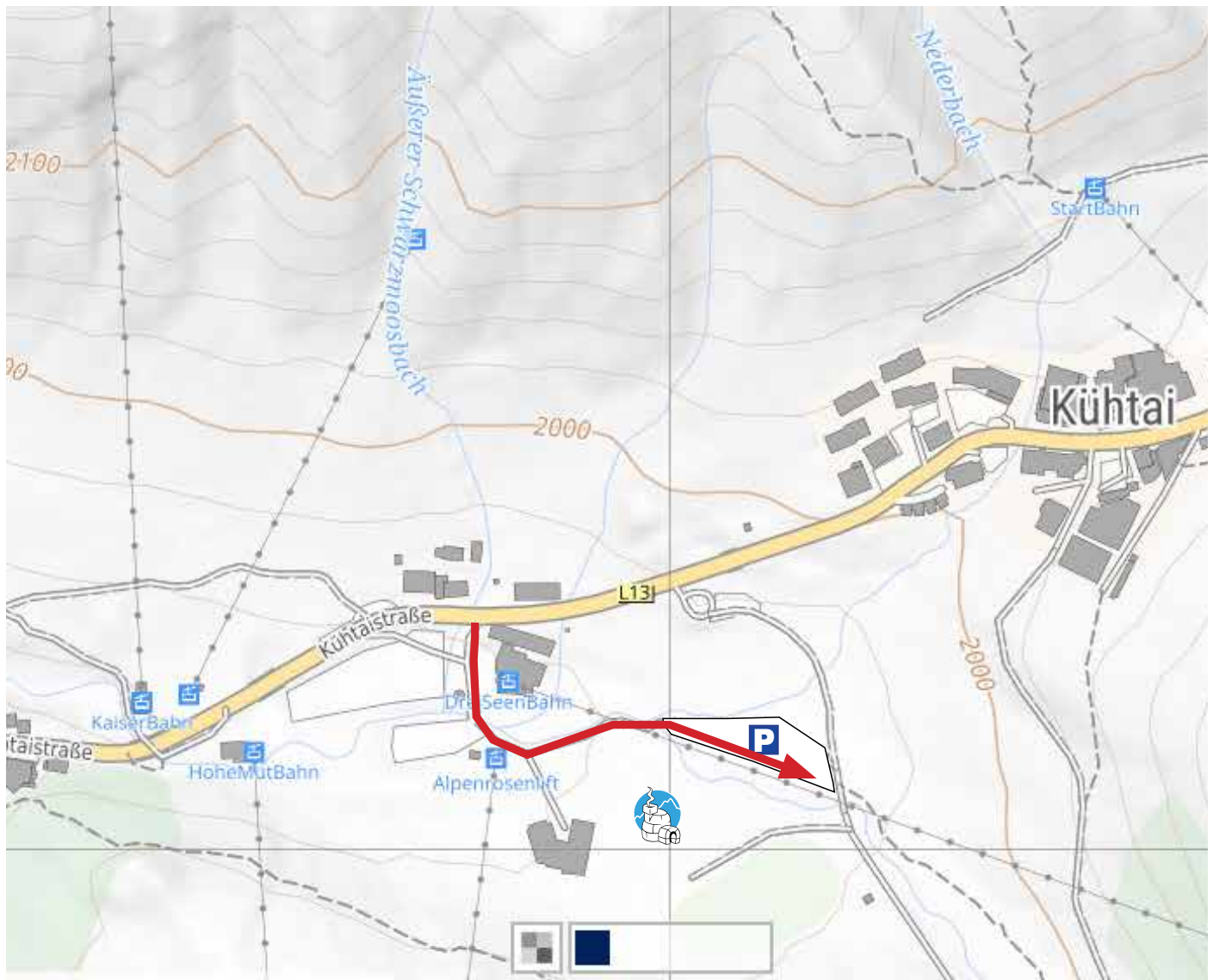
### NOT included

- Travel to and from Kühtai (and any parking charges)
- All drinks with the exception of tea
- Souvenir (e.g. bath towel)

# Journey & Parking

By car

Address «Kühtai 24, 6183 Kühtai, Österreich»



## Checklist

- I have got all the equipment I need as listed in the blue box.
- I have read and understood the safety information on page 2.
- I have planned my outward journey adequately (weather check, extra time).
- I have the mobile phone that I specified on reservation with me and am contactable.
- I am adequately insured (cancellation insurance, emergency, foreign country).

## Contact, questions & more information

Frequently asked questions can be found on our homepage on [FAQ](#).

Information to the Kühtai region: Tourismus Kühtai. [www.kuehtai.info](http://www.kuehtai.info) • +43 5239 52 22

Free call from CH: 0800 880 818 • Free call from DE/AT: 0800 880 81 88 • +41 41 612 27 28 • [www.iglu-dorf.com](http://www.iglu-dorf.com) • [info@iglu-dorf.com](mailto:info@iglu-dorf.com)